

**Acronia grobleri** Luer & Hirtz, sp. nov. TYPE: Ecuador—Carchi: Río Blanco, along new road between Carolina and Chical, alt. 1800 m, 10 Apr. 2007, A. Hirtz, L. Grobler *et al.* 9217 (Holotype: MO), C. Luer illustr. 21311.

FIGURE 5.

*Species haec Acronia bucranonis (Luer & Hirtz) Luer similis, sed pedunculis longioribus, sepalis acuminatis, petalis angustioribus, labello ad medium non deflexo cum lobis rotundatis differt.*

**Plant** small, epiphytic, caespitose; roots slender. Ramicauls slender, ascending to erect, 5–10 cm long, with a close, tubular sheath below the middle and another at the base. **Leaf** coriaceous, sessile, narrowly ovate, acute, 3–4.5 cm long, 1–1.6 cm wide, the base broadly cuneate. **Inflorescence** a fascicle of solitary, successive flowers borne from a prostrate spathe 3–4 mm long, at the base of the leaf; peduncle suberect, 10–15 mm long; floral bract 2 mm long; pedicel 3.5 mm long; ovary 3 mm long; **sepals** tan, glabrous, the dorsal sepal ovate, acuminate, acute, concave below the middle, 9 mm long, 3.5 mm wide, 3-veined, the lateral sepals connate to the tip into a narrowly ovate, acute, concave synsepal, 9 mm long, 3.25 mm wide, 4-veined; **petals** tan, linear, subsigmoid, acute, microscopically erose-denticulate, 8 mm long, 1 mm wide, 3-veined; **lip** tan, glabrous, sagittate-trilobed, obtuse, with erect, rounded, basal lobes 1 mm long embracing the column, 3 mm long excluding the lobes, 1.25 mm wide, oblong above the lobes, obtuse, minutely apiculate, the disc slightly concave, the base shortly deflexed, truncate, hinged to the base of the column; **column** semiterete, 1.5 mm long, the anther and stigma apical, the foot rudimentary.

**Etymology.** Named for Lourens Grobler, orchid grower of South Africa, a co-collector of this species.

**Comments.** This species is closely related to *Acronia bucranon* (Luer & Hirtz) Luer, both species occurring in northwestern Ecuador. Similar in habit with slender ramicauls, the ovate leaves of the latter are not shallowly cordate at the base, and the peduncles are longer and suberect. The sepals are narrowly ovate and concave; the petals are narrowly linear and subsigmoid; and the lobes basal lobes of a non-deflexed lip are rounded instead of uncinat.

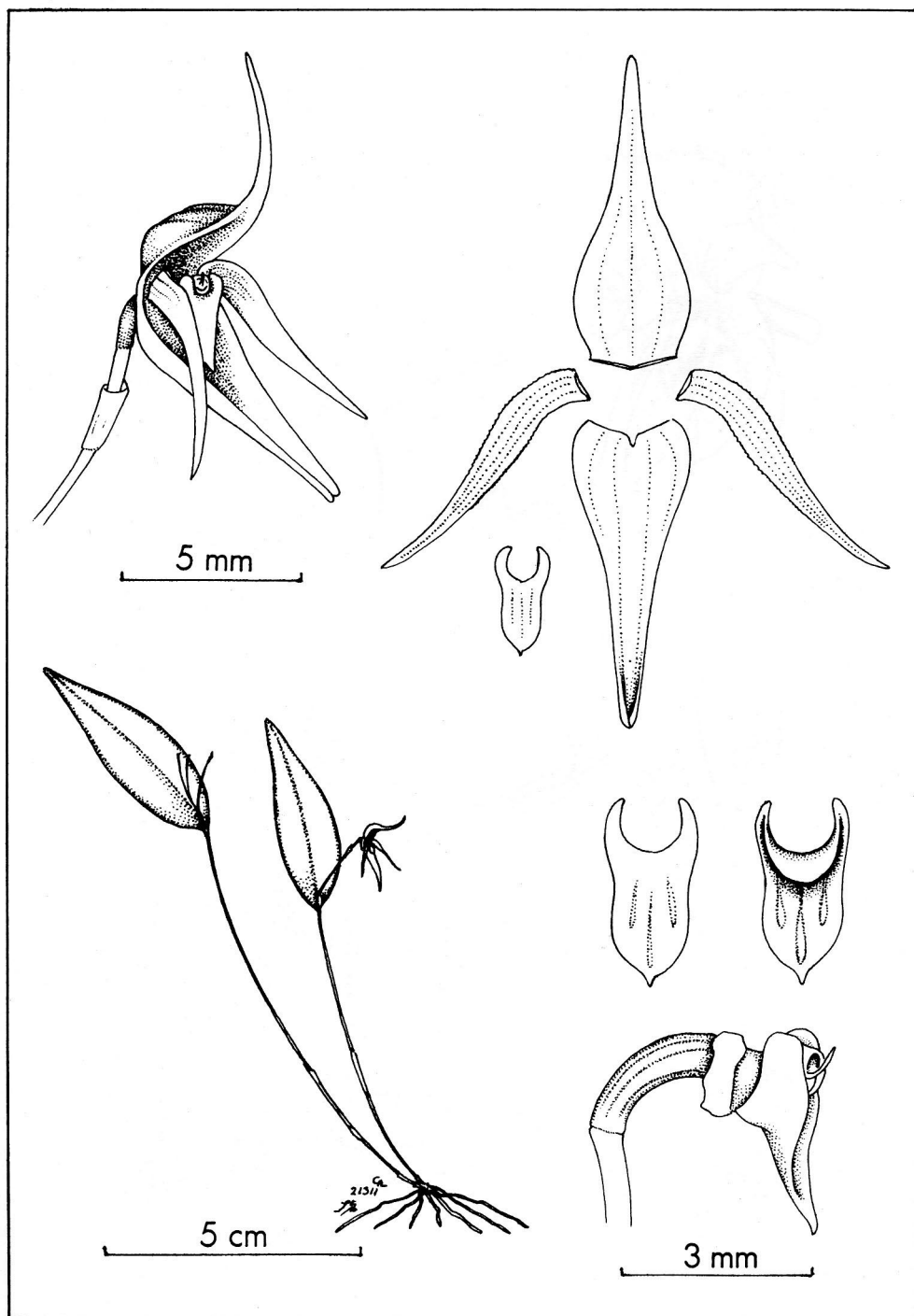


FIGURE 5. *Aconia grobleri* Luer & Hirtz, C. Luer illustr. 21311.